

DESIGN A 100A ACTIVE LOAD TO TEST POWER SUPPLIES

BY JIM WILLIAMS • CONSULTING EDITOR

**WIDEBAND
RESPONSE LETS
YOU TEST FOR
THE TRANSIENT
BEHAVIOR
OF YOUR SUPPLY.**

You use an active-load test circuit to ensure that a power supply for a microprocessor or for other digital loads supplies 100A transient currents. This active load can provide a dc load for a power supply, and it can rapidly switch between dc levels. These transient loads simulate the fast logic switching in the microprocessor.

Ideally, your regulator output is invariant during a load transient. In practice, however, you will encounter some variations, which become problematic if allowable operating-voltage tolerances are exceeded. You can base your active-load circuit on previous designs of wideband loads that operate at lower currents (**Reference 1**). This approach allows you to design a closed-loop, 500-kHz-bandwidth, 100A active load having linear response.

IMAGE: THINKSTOCK

Conventional active-load circuits have shortcomings (**Figure 1**). The regulator under test drives dc and switched resistive loads. Monitor the switched current and the output voltage so that you can compare the stable output voltage versus the load current under both static and dynamic conditions. The switched current is either on or off. You cannot control it in the linear region as it changes.

You can further develop the concept by including an electronic-load switch control (**Figure 2**). The input pulse switches the FET through a drive stage, generating a transient load current from the regulator and its output capacitors. The size, composition, and location of these capacitors have a profound effect on transient response. Although the electronic con-

AT A GLANCE

- ▶ Use active loads to test your power supplies.
- ▶ Using wide-bandwidth circuitry allows fast transient response.
- ▶ Trim the circuit to obtain the cleanest load-step signals.
- ▶ Minimize the inductance in the high-current path.
- ▶ Verify the measurements in a separate test setup.

control facilitates high-speed switching, the architecture cannot emulate loads that are between the minimum and the maximum currents. Additionally, you are not controlling the FET's switching speed because doing so introduces

wideband harmonics into the measurement that may corrupt the oscilloscope display.

TRANSIENT GENERATOR

Placing Q_1 within a feedback loop allows true, linear control of the load tester (**Figure 3**). You can now linearly control Q_1 's gate voltage, allowing you to set an instantaneous transient current at any point and to simulate nearly any load profile. Feedback from Q_1 's source to control amplifier A_1 closes a control loop around Q_1 , stabilizing its operating point. The instantaneous input-control voltage and the value of the current-sense resistor set Q_1 's current over a wide bandwidth. You use the dc-load-set potentiometer to bias A_1 to the conduction threshold of Q_1 . Small variations in A_1 's output result in large current changes in Q_1 , meaning that A_1 need not supply large output excursions. The fundamental speed limitation is the small-signal bandwidth of the amplifier. As long as the input signal stays within this bandwidth, Q_1 's current waveform is identical in shape to A_1 's input control voltage, allowing linear control of the load current. This versatile capability permits you to simulate a wide variety of loads.

You can improve this circuit by adding some components (**Figure 4**). A gate-drive stage isolates the control amplifier from Q_1 's gate capacitance

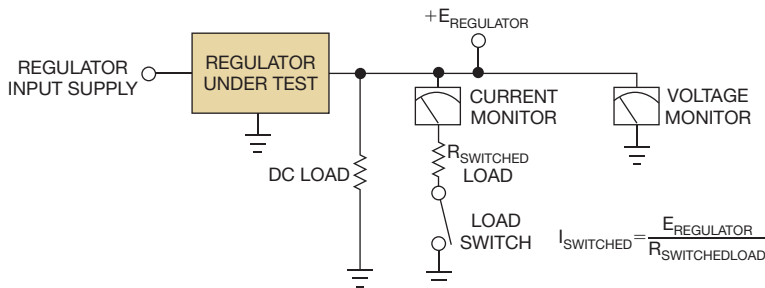


Figure 1 This conceptual regulator-load tester includes switched and dc loads and monitors voltage and current. The resistor values set dc and switched-load currents.

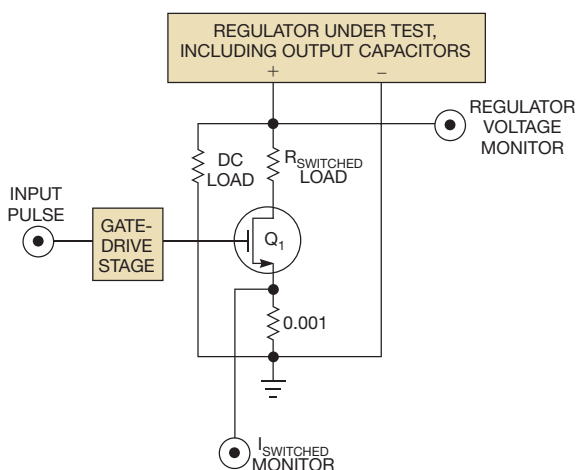


Figure 2 A conceptual FET-based load tester permits step load-ing. Switched current is either on or off; there is no controllable linear region.

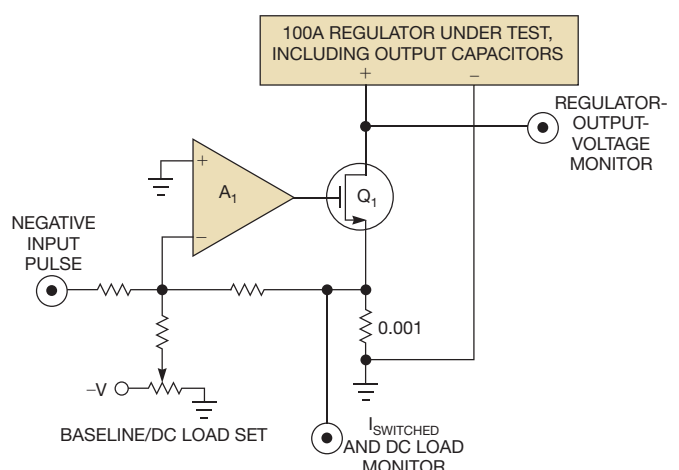


Figure 3 A feedback-controlled load-step tester allows continuous FET-conductivity control.

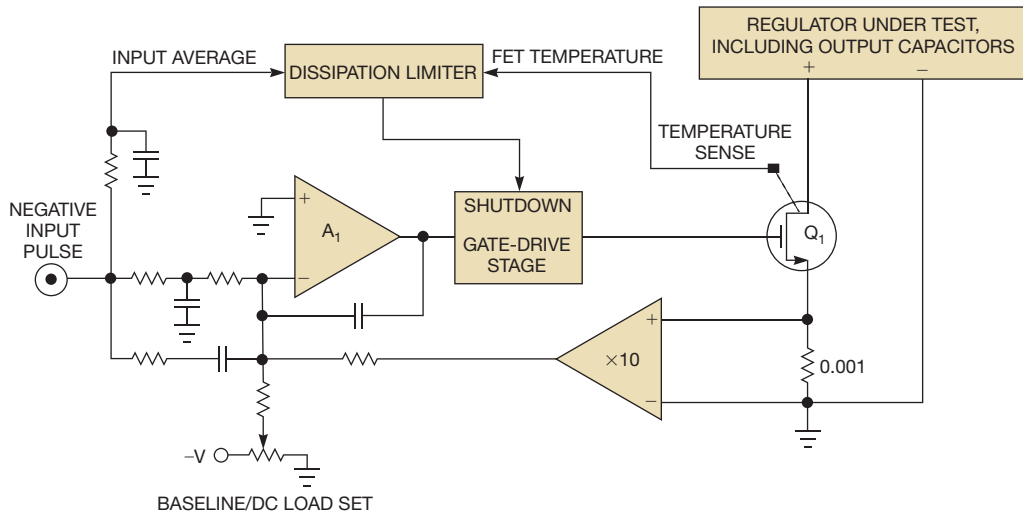


Figure 4 Adding a differential amplifier provides high-resolution sensing across a 1-mΩ shunt resistor. A dissipation limiter shuts down the gate drive. Added capacitors tailor the bandwidth and optimize the loop response.

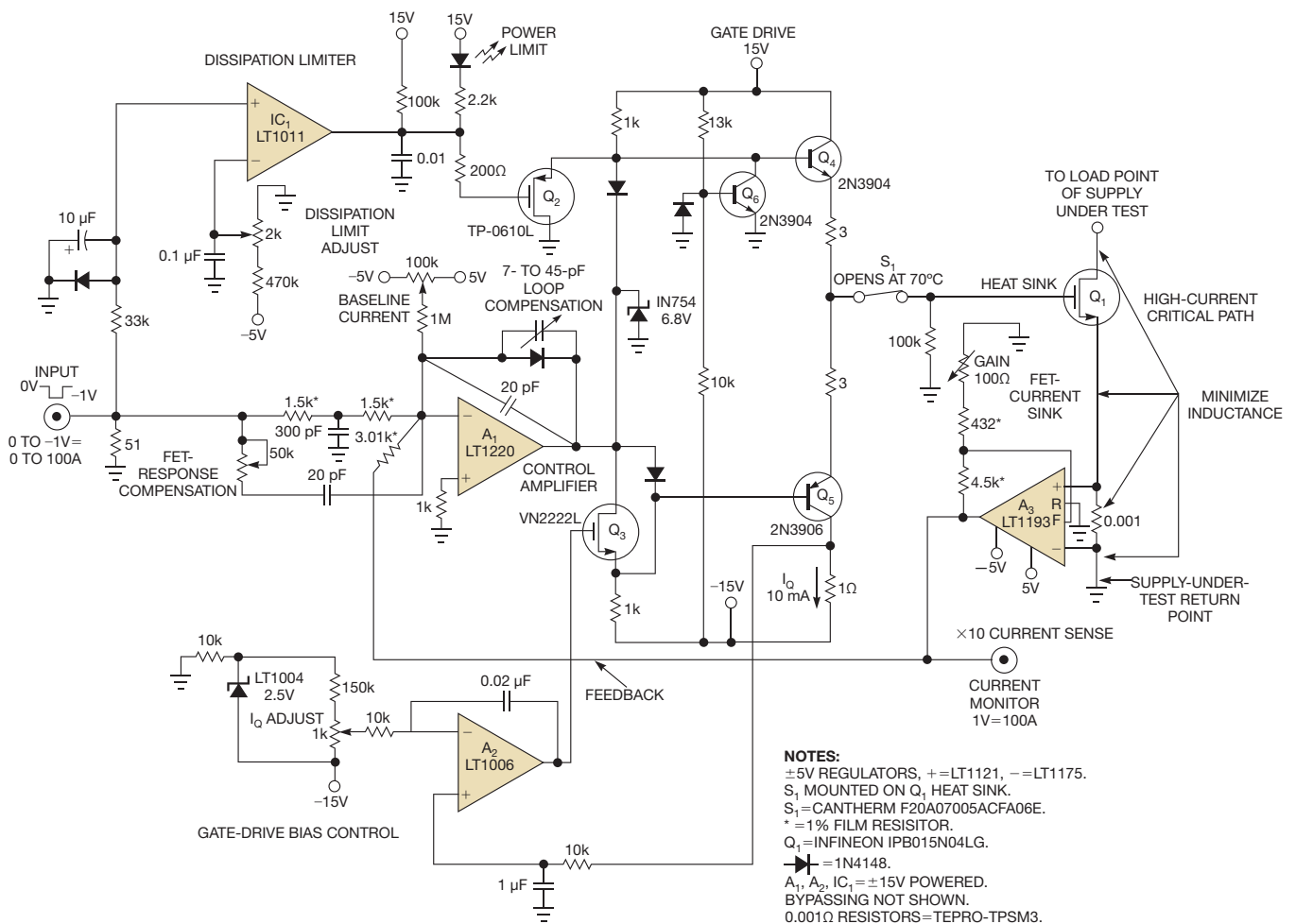


Figure 5 You can derive a detailed active-load schematic from the conceptual design.

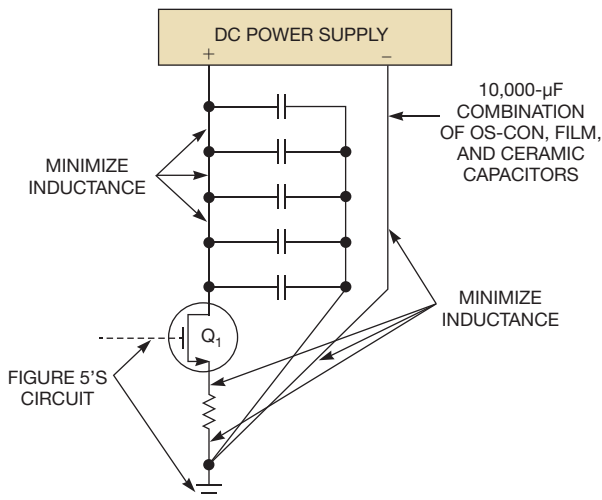


Figure 6 The test fixture for dynamic response has massive, broadband bypassing and a low-inductance layout. This setup provides low-loss, high-current power to Q_1 .

to maintain the amplifier's phase margin and provide low delay and linear current gain. A gain-of-10 differential amplifier provides high-resolution sensing across the 1-m Ω current-shunt resistor. You can design a power-dissipation limiter that acts on the aver-

aged input value and Q_1 's temperature. It shuts down the FET's gate drive to preclude excessive heating and subsequent destruction. Capacitors can be added to the main amplifier to tailor the bandwidth and optimize the loop response.

CAPACITORS CAN BE ADDED TO THE MAIN AMPLIFIER TO TAILOR THE BANDWIDTH AND OPTIMIZE THE LOOP RESPONSE.

You can develop a detailed schematic based on these concepts (**Figure 5**). The main amplifier, A_1 , responds to dc and pulse inputs. You also send it a feedback signal from A_3 that represents load current. A_1 sets Q_1 's conductivity through the Q_4/Q_5 gate-drive stage, which is actively biased using A_7 . The voltage drop across the gate drive's input diodes would be high enough to fully turn on Q_4 and Q_5 . To prevent this overdrive, reduce the voltage across the lower diode with Q_3 . Amplifier A_2 determines the gate-drive-stage bias by comparing Q_5 's averaged collector current with a reference and controlling Q_3 's conduction, thus closing a loop. That loop keeps the voltage drop

VERIFYING CURRENT MEASUREMENT

Theoretically, Q_1 's source and drain current are equal. Realistically, they can differ due to the ef-

fects of residual inductances and the 28,000-pF gate capacitance. A_3 's indicated instantaneous current could be erroneous if these or other terms come into play. You can verify that the source and the drain currents are equivalent (**Figure A**). Add a top-side, 1-m Ω shunt and a gain-of-10 differential amplifier to duplicate the circuit's bottom-side current-sensing section. The results should eliminate concern over Q_1 's dynamic-current differences (**Figure B**). The two 100A pulse outputs are identical in amplitude and shape, promoting confidence in the circuit's operation.

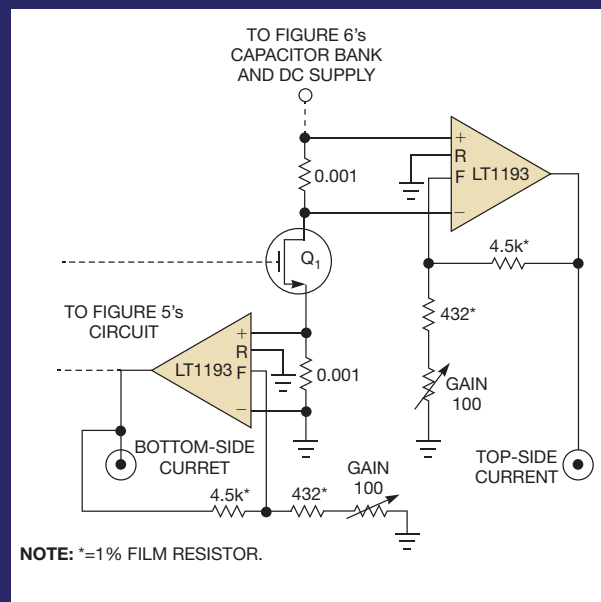


Figure A Use this arrangement for observing Q_1 's top and bottom dynamic currents.

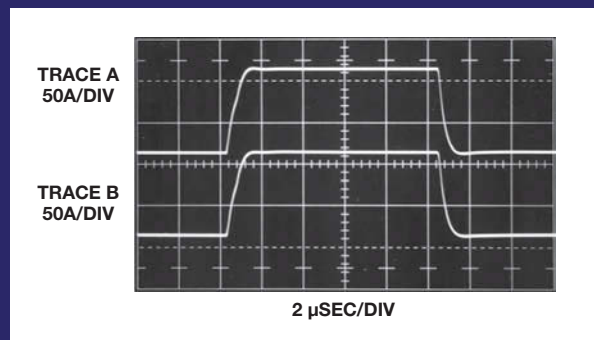


Figure B Q_1 's top (Trace A) and bottom (Trace B) currents show identical characteristics despite high-speed operation.

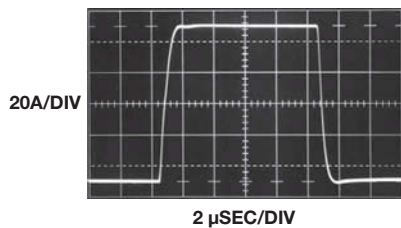


Figure 7 When you optimize the dynamic response, you get an exceptionally pure 100A current pulse.

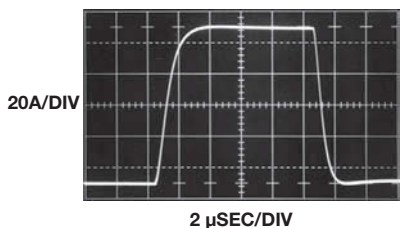


Figure 8 The response becomes overdamped if you set an excessive feedback-capacitor value for A_1 .

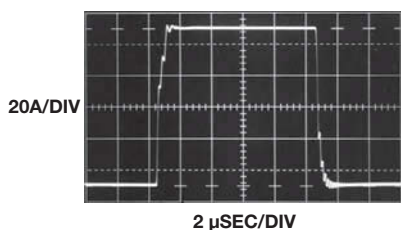


Figure 9 An inadequate feedback-capacitor value for A_1 decreases the transition time but promotes instability. Further capacitor reduction causes oscillation.

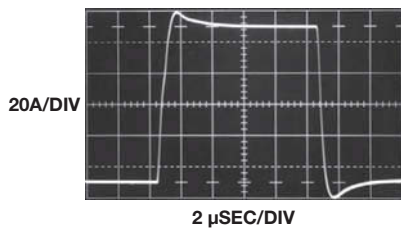


Figure 10 Overdoing the FET's response compensation results in corner peaking.

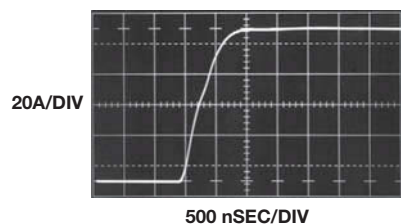


Figure 11 By optimizing the dynamic trims, the circuit gets a 650-nsec rise time, corresponding to a 540-kHz bandwidth.

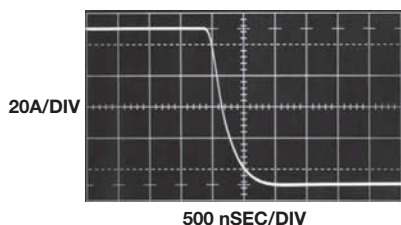


Figure 12 The optimized trims yield a 500-nsec fall time.

across the bases of Q_4 and Q_5 to a value well under 1.2V, and servos that value until Q_4 and Q_5 have a 10-mA average collector-bias current.

The duty cycle of the load overheats if it is on for too long. You can fashion a protection circuit with techniques that high-power-pulse-generator designers use (references 2, 3, and 4). Feed comparator IC_1 the average input-voltage value. It compares that voltage to a reference voltage set with the dissipation-limit-adjust potentiometer. If the input duty cycle exceeds this limit, comparator IC_1 turns off the FET gate drive through Q_2 . Thermal switch S_1 pro-

vides further protection. If Q_1 's heat sink gets too hot, S_1 opens and disconnects the gate-drive signal. By diverting Q_4 's bias voltage, transistor Q_6 and the zener diode prevent Q_1 from turning on if the $-15V$ supply is not present. A 1-k Ω resistor on A_1 's positive input prevents amplifier damage should you lose the 15V power supply.

Trimming optimizes the dynamic response, determines the loop's dc baseline idle current, sets the dissipation limit, and controls the gate drive's stage bias. The dc trims are self-explanatory. The loop-compensation and FET-response ac trims at A_1 are subtler. Adjust them for the best compromise

INSTRUMENTATION CONSIDERATIONS

The pulse-edge rates in the main article are not particularly fast, but high-fidelity response requires some diligence. In particular, the input pulse must be cleanly defined and devoid of parasitics, which would distort the circuit's output-pulse shape. A_1 's 2.1-MHz input RC (resistance/capacitance) network filters the pulse generator's preshoot, rise-time, and pulse-transition aberrations, which are well out of band. These terms are not of concern. Almost all general-purpose pulse generators should perform well.

A potential offender is excessive tailing after transitions. Meaningful dynamic testing requires a rectangular pulse shape, flat on the top and the bottom within 1 to 2%. The circuit's input band-shaping filter removes the aforementioned high-speed-transition-related errors but does not eliminate lengthy tailing in the pulse flats. You should check the pulse generator for this issue with a

well-compensated probe at the circuit input. The oscilloscope should register the desired flat-top- and flat-bottom-waveform characteristics. In making this measurement, if high-speed-transition-related events are bothersome, you can move the probe to the bandlimiting 300-pF capacitor. This practice is defensible because the waveform at this point determines A_1 's input-signal bandwidth.

Some pulse-generator output stages produce a low-level dc offset when their output is nominally at its 0V state. The active-load circuit processes such dc potentials as legitimate signals, resulting in a dc-load baseline-current shift. The active load's input scale factor of 1V=100A means that a 10-mV zero-state error produces 1A of dc baseline-current shift. A simple way to check a pulse generator for this error is to place it in external-trigger mode and read its output with a DVM (digital voltmeter). If offset is present, you can account for it by

nullifying it with the circuit's baseline-current trim. You could also use a different pulse generator.

Keep in mind parasitic effects due to probe grounding and instrument interconnection. At pulsed 100A levels, you can easily induce parasitic current into "grounds" and interconnections, distorting displayed waveforms. Use coaxially grounded probes, particularly at A_2 's output-current monitor and preferably anywhere else.

It is also convenient and common practice to externally trigger the oscilloscope from the pulse generator's trigger output. There is nothing wrong with this practice; in fact, it is a recommended approach for ensuring a stable trigger as you move probes between points. This practice does, however, potentially introduce ground loops due to multiple paths between the pulse generator, the circuit, and the oscilloscope. This condition can falsely cause apparent distortion in displayed waveforms. You can avoid this effect by using a trigger isolator at the oscilloscope's external-trigger input. This simple coaxial component typically comprises isolated ground and signal paths, which often couple to a pulse transformer to provide a galvanically isolated trigger event. Commercial examples include the Deerfield Laboratory (www.deerfieldlab.com) 185 and the Hewlett-Packard (www.hp.com) 11356A. Alternatively, you can construct a trigger isolator in a small BNC-equipped enclosure (Figure A).

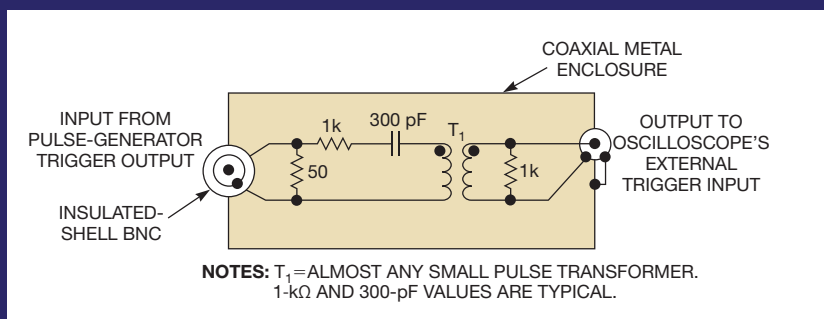


Figure A You can make a trigger isolator that floats input BNC's ground using an insulated-shell BNC connector. A capacitively coupled pulse transformer avoids loading input, maintains isolation, and delivers the trigger to the output. A secondary resistor on T_1 terminates ringing.

between loop stability, edge rate, and pulse purity. You can use A_1 's loop-compensation trimming capacitor to set the roll-off for maximum bandwidth and accommodate the phase shift that Q_1 's gate capacitance and A_3 introduce. The FET-response adjustment partially compensates Q_1 's inherent nonlinear-gain characteristic, improving the front and rear pulses' corner fidelity (see sidebar "Trimming procedure," with the online version of this article at www.edn.com/110922df).

CIRCUIT TESTING

You initially test the circuit using a fixture equipped with massive, low-loss, wideband bypassing (Figure 6). It is important to do an exceptionally low-inductance layout in the high-current path. Every attempt must be made

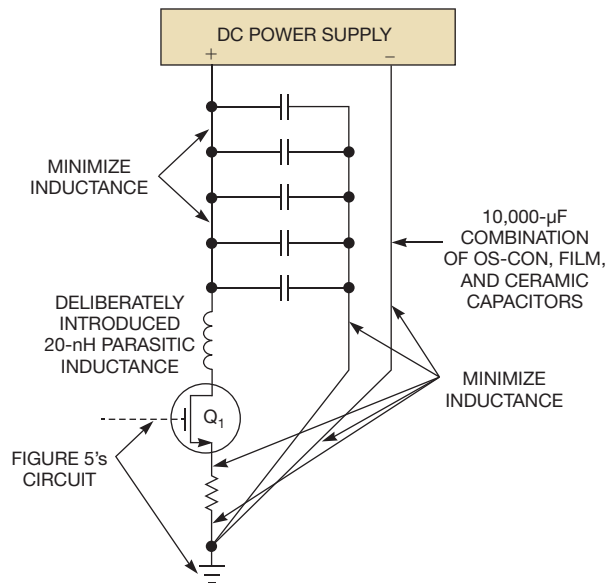


Figure 13 You can deliberately introduce a parasitic, 20-nH inductance to test layout sensitivity.

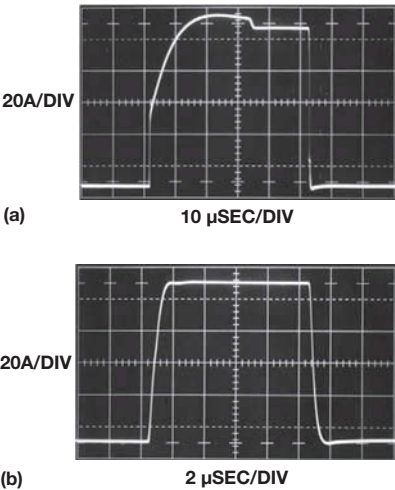


Figure 14 A 20-nH-inductance, 1.5 \times 0.075-in., flat-copper, braided wire completely distorts (a) the optimized response (b). Note the five-times-horizontal-scale change between a and b.

to minimize inductance in the 100A path. You should get good results after you properly trim the circuit if you minimize inductance in the high current path (Figure 7). The 100A-amplitude, high-speed waveform is pure, with barely discernible top-front and bottom-rear corner infidelities (see sidebars “Verifying current measurement” and “Instrumentation considerations”).

To study the effects of ac trim on the waveform, you must perform deliberate misadjustments. An overdamped response is typical of excess A_1 feedback capacitance (Figure 8). The current pulse is well-controlled, but the edge rate is

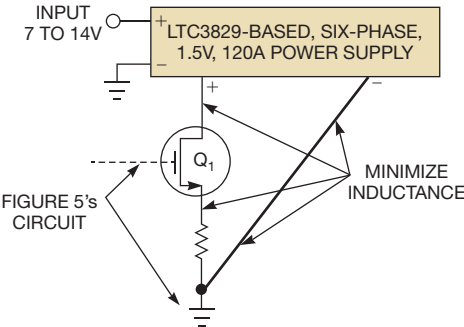


Figure 15 Use low-impedance connections to test a six-phase, 120A buck regulator.

slow. Inadequate feedback capacitance from A_1 decreases the transition time but promotes instability (Figure 9). Further reducing the trim capacitance causes loop oscillation because the loop’s phase shift causes a significant phase lag in the feedback. Scope photos of uncontrolled 100A loop oscilla-

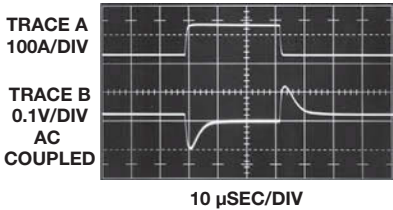


Figure 16 The regulator’s response to a 100A pulsed load (Trace A) is well-controlled on both edges (Trace B).

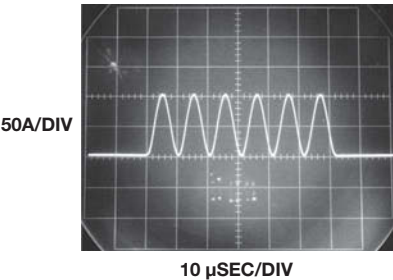


Figure 17 You can use the circuit to create a 100-kHz, 100A-sine-wave load.

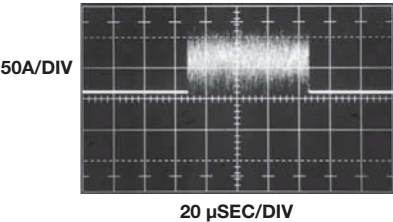


Figure 18 The active-load circuit sinks 100A p-p in response to a gated random-noise input.

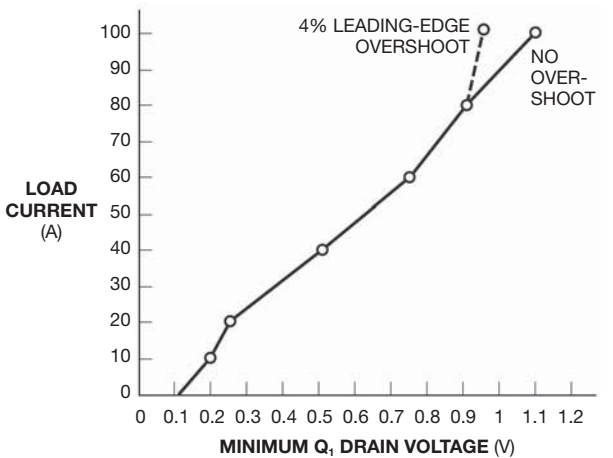


Figure 19 Active-load characteristics feature small current-accuracy and regulation errors. The bandwidth mildly retards at low currents. The compliance voltage is less than 1V at 100A with 4% leading-edge overshoot and 1.1V with no overshoot.

TABLE 1 ACTIVE-LOAD CHARACTERISTICS

Current accuracy (referred to input)	1% full-scale
Temperature drift	100 ppm/°C of reading +20 mA/°C
Current regulation versus supply	Greater-than-60-dB power-supply-rejection ratio
Bandwidth	540 kHz at 100A with a rise time of 650 nsec, 435 kHz at 10A with a rise time of 800 nsec
Compliance voltages for full output current	0.95V minimum (see Figure 19); 70°C Q ₁ thermal-dissipation limiter sets maximum

tion are unavailable. The event is too thrilling to document. Overdoing the FET's response compensation causes peaking in the corners of the waveform (Figure 10). Restoring the ac trims to nominal values causes a 650-nsec rise time, equivalent to a 540-kHz bandwidth, on the leading edge (Figure 11). Examining the trailing edge under the same conditions reveals a somewhat-faster 500-nsec fall time (Figure 12).

LAYOUT EFFECTS

If parasitic inductance is present in the high-current path, your design cannot remotely approach the previous responses. You can deliberately place a tiny, 20-nH parasitic inductance in Q₁'s drain path (Figure 13), which will cause an enormous waveshape degradation deriving from the inductance and the loop's subsequent response (Figure 14a). A monstrous error dominates the leading edge before recovery occurs at the middle of the pulse's top. Additional aberration is evident in the falling edge's turn-off. The figure's horizontal scale is five times slower than the optimized response (Figure 14b). The lesson is clear: High-speed 100A excursions do not tolerate inductance.

REGULATOR TESTING

After you address the compensation and layout issues, you can test your power-supply regulator (Figure 15). The six-phase, 120A Linear Technology Corp (www.linear.com) LTC1675A buck regulator acts as a demonstration board. The test circuit generates the 100A load pulse (Trace A of Figure 16). The regulator maintains a well-controlled response on both edges (Trace B of Figure 16). The active load's true linear response and high bandwidth permit wide-ranging load-waveform characteris-

tics. Although the step-load pulse in Figure 16 is the commonly desired test, you can generate any load profile. A burst of 100A, 100-kHz sine waves is an example (Figure 17). The response is crisp, with no untoward dynamics despite the high speed and current. You could form a load even from an 80-μsec burst of 100A p-p noise (Figure 18). The load circuit has high accuracy, compliance, and regulation specifications (Figure 19 and Table 1). **EDN**

REFERENCES

- 1 Williams, Jim, "Load Transient Response Testing for Voltage Regulators," Application Note 104, Linear Technology Corp, October 2006, <http://bit.ly/p5q2AD>.
- 2 "Overload Adjust," *HP-214A Pulse Generator Operating and Service Manual*, Hewlett-Packard, figures 5 through 13.
- 3 "Overload Relay Adjust," *HP-214A Pulse Generator Operating and Service Manual*, Hewlett-Packard, 1964, pg 5.
- 4 "Overload Detection/Overload Switch," *HP-214B Pulse Generator Operating and Service Manual*, Hewlett-Packard, March 1980, pg 8.

AUTHOR'S BIOGRAPHY



Jim Williams was a staff scientist at Linear Technology Corp, where he specialized in analog-circuit and instrumentation design. He served in similar capacities at National Semiconductor, Arthur D Little, and the Instrumentation Laboratory at the Massachusetts Institute of Technology (Cambridge, MA). He enjoyed sports cars, art, collecting antique scientific instruments, sculpture, and restoring old Tektronix oscilloscopes. A long-time EDN contributor, Williams died in June 2011 after a stroke.